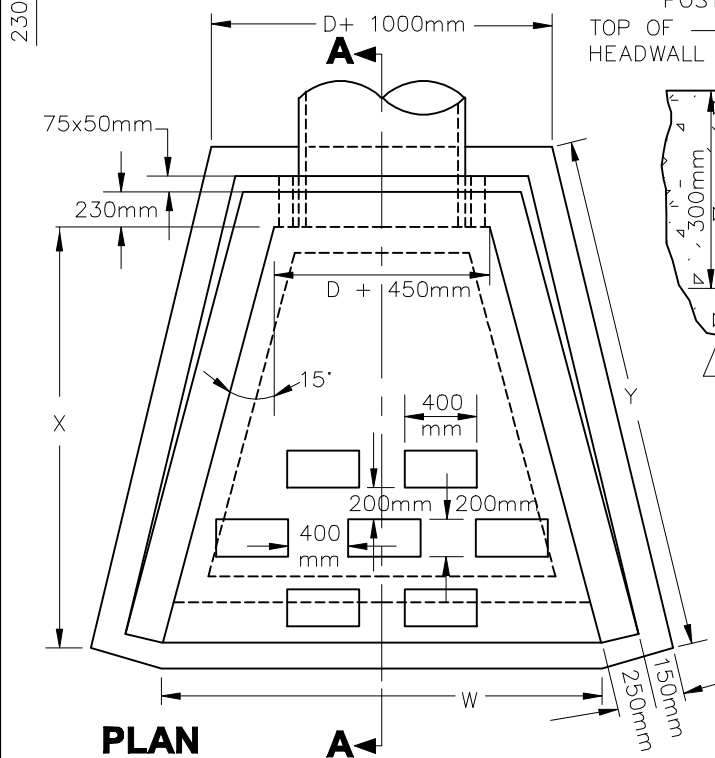
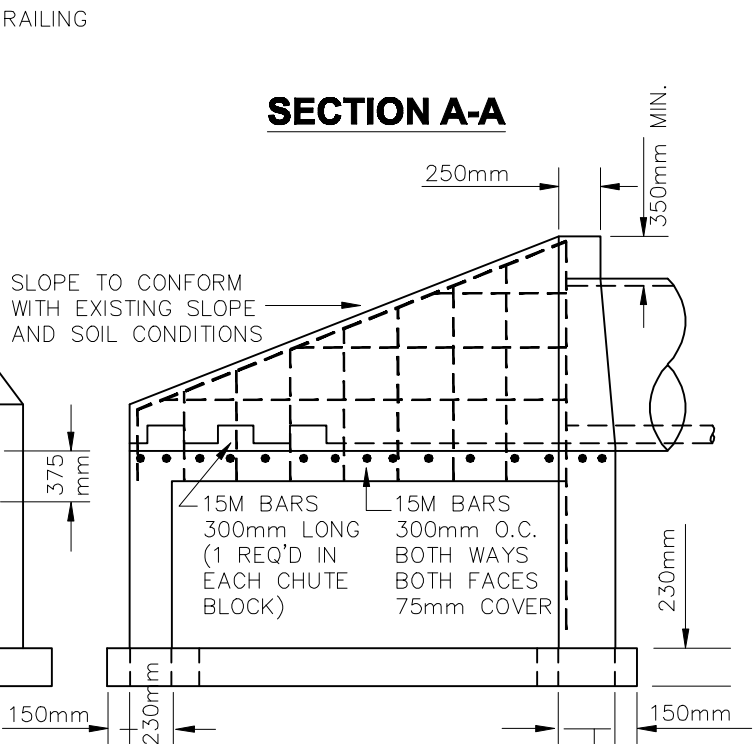


**ELEVATION**

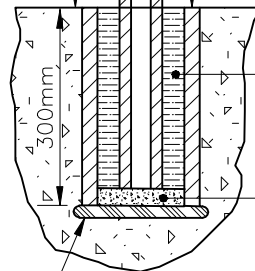


**PLAN**



**SECTION A-A**

POST  
TOP OF HEADWALL  
SOCKET  
300mm FOR D=300 TO 975mm  
375mm FOR D=1050 TO 1800mm



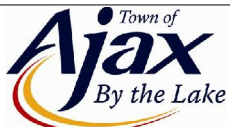
**DETAIL 'A'**

D (mm)	W (mm)	X (mm)	Y (mm)
300	1725	1830	2130
375	1800	1830	2130
450	1875	1830	2130
525	2310	2440	2770
600	2390	2440	2770
675	2460	2440	2770
750	2540	2440	2770
825	2615	2440	2770
900	2690	2440	2770
975	2770	2440	2770
1050	3150	3050	3450
1200	3300	3050	3450
1350	3450	3050	3450
1500	3600	3050	3450
1650	3760	3050	3450
1800	3910	3050	3450

**NOTES:**

1. ALL CONCRETE TO CONFORM TO OPSS 1350, 30 MPa., 7.0% ±1.5% AIR CONTENT.
2. ALL EXPOSED EDGES TO BE CHAMFERED 25mm.
3. REINFORCING STEEL TO BE HARD GRADE DEFORMED BARS WITH YIELD STRENGTH OF 400 MPa. AS PER CSA 630-15-M.
4. CONCRETE FOOTINGS TO BE POURED ON ALL FOUR SIDES OF HEADWALL.

5. ALL HEADWALLS ARE TO HAVE GRATINGS AS PER OPSD 804.050
6. OPSD 804.030 MAY BE USED WHEN APPROVED BY THE TOWN ENGINEER.



ENGINEERING SECTION

**STORM SEWER HEADWALL**

DWG. No.

**AS-140**

DATE

JANUARY 2011

REVISION No.