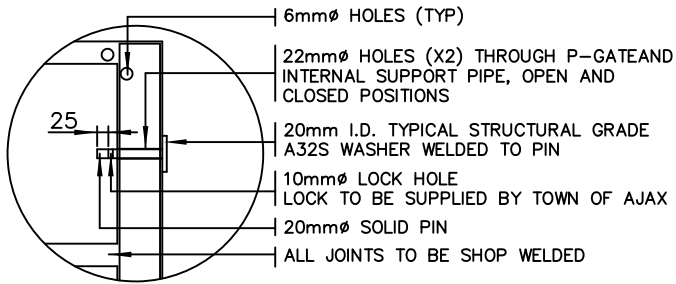


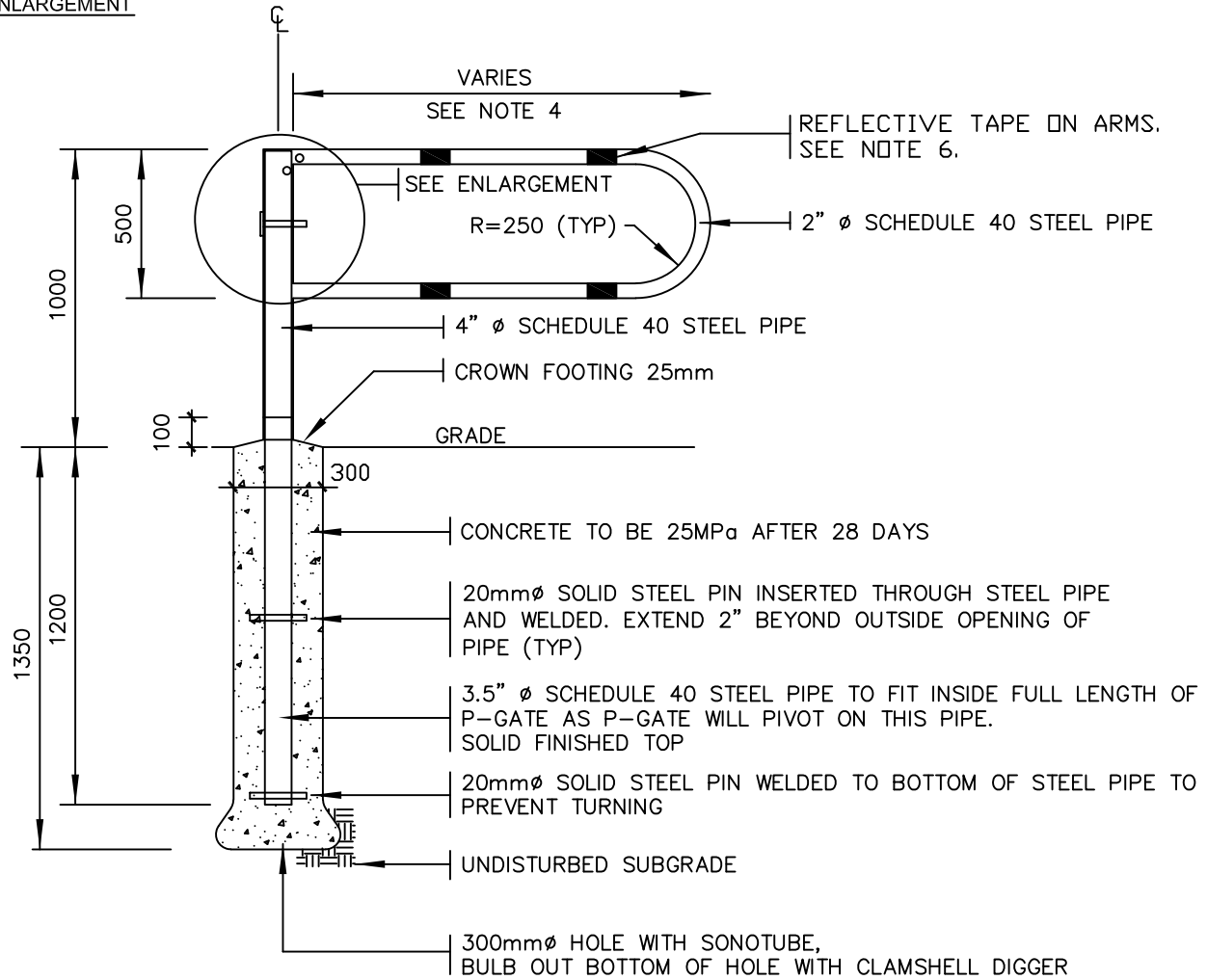
ALL DIMENSIONS IN MILLIMETRES AND/OR METRES, DRAWING NOT TO SCALE



ENLARGEMENT

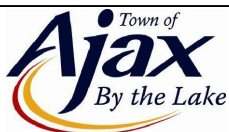
TYPE 'A' STEEL PIPE
HOT DIPPED GALVANIZED

TYPE 'B' STEEL PIPE
BLACK POWDER COATED



NOTES:

1. ALL DIMENSIONS ARE IN MILLIMETERS UNLESS OTHERWISE NOTED.
2. P-GATE TO BE TYPE 'A' OR TYPE 'B' AFTER FABRICATION IN CONFORMANCE WITH CSA G-164. COLOR TO BE MATTE BLACK. PROVIDE 6mm ϕ HOLES TO PERMIT GASSES TO ESCAPE, HOLES TO BE ON UNDERSIDE OF PIPE.
3. ALL EXPOSED AND SHARP CORNERS TO BE GROUND SMOOTH.
4. STANDARD SIZES ARE 900, 1200, 1500, AND 1800mm.
5. LOCATIONS REQUIRING BOLLARD IN ACCORDANCE WITH DS412 SHALL USE 3.5" ϕ SCHEDULE 40 STEEL PIPE INCLUDING 22mm ϕ HOLES.
6. DOT-C2 REFLECTIVE TAPE ON FRONT AND BACK OF ARMS AS INDICATED. MINIMUM 0.60M IN LENGTH EACH.



ENGINEERING SECTION

P-GATE DETAIL

DWG. No.

AS-346

DATE

OCTOBER 2017

REVISION No.